



Mington

Kuen Lee Metal Works Limited

Mington Metal and Plastic Products Manufacturing Co., Ltd.

Location

Head Office: Kuen Lee Metal Works Limited

Room 202 Corn Yan Centre, 3 Jupiter Street, North Point, Hong Kong
Tel: (852) 28063391 Fax: (852) 25641668

Factories: Mington Metal and Plastic Products Manufacturing Co., Ltd.

36 Fenghuang Road, Yongfa Industrial Park, Dongshan District,
Qishi Township, Dongguan City, Guangdong Province, China 523511
Tel/Fax: (86) 769-86716393

Contact

For enquiries, please contact: Wilfred Wong, Director of Sales

Tel: (852) 60783206 (Hong Kong)

(86) 13610018532 (China)

E-mail: wilfredwong@126.com

Or

Mr. Joe Wellisch

Advantage Components, Inc.

8503 29th Street East, Parrish, FL 34219, USA

Tel: (941) 306-3492 (USA)

(852) 8170 1044 (Hong Kong)

(941) 232 3491 (Mobile, USA)

E-mail: joe.wellisch@advantagecomponents.com

SKYPE ID: jswellisch



COMPANY PROFILE

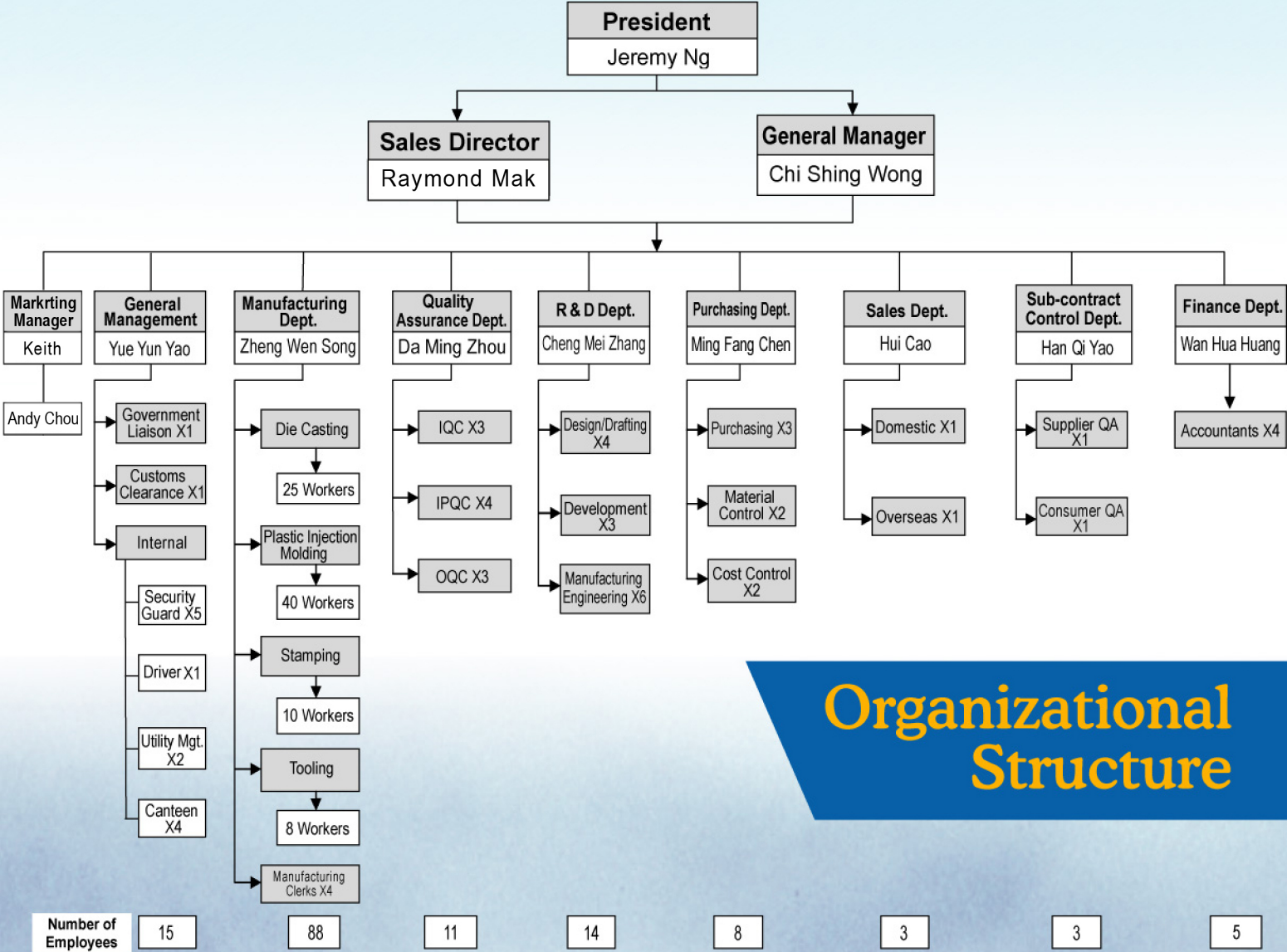
Kuen Lee Metal Works Limited, the parent company of Mington Metal and Plastic Manufacturing Co., Limited, was founded in 2003 in Hong Kong by Mr. Jeremy Ng, President; Mr Chi Shing Wong, General Manager, and Mr.Wong, Sales Director. Mr. Jeremy Ng is a Certified Public Accountant of U.S.A., Canada and Hong Kong who has profound knowledge in finance and operation management. Mr. Chi Shing Wong has over 20 years of business management experience. Mr. Wong has worked in the U.S. for 12 years and possesses a strong background in engineering. Kuen Lee expanded their business in 2006 and setup their manufacturing facility in Dongguan, Mington Metal and Plastic Manufacturing Company, Limited, which occupies a manufacturing space of 50,000 sq. ft. with 150 staff and workers. The register capital of the company is 4 million RMB. Mington specializes in manufacturing products made of metal, alloy and plastic. We have been providing services to help customers develop and manufacture new products. Referrals are usually our mode of sales while ISO9001 standardized quality control system is strictly enforced in order to deliver products and to retain customers. Throughout these years, we have never had a customer turning their business elsewhere and we have been enjoying a steady growth of about 20% per annum. Our sales volume exceeded \$10M in 2008.

Our Goal

It is our mission to become the first and best choice of customers for reliable products and superior services.

Our Company Specializes in

- Die casting
- Tooling
- Plastic injection Molding
- Stamping



Organizational Structure



Tooling Division

Description of Equipment	Quantity
CNC Precision Carving Machine	1
CNC Milling Center	1
Linear Cutting Machine	3
Milling Machine	4
Grinding Machine	2
EDM	4



Design Room



CNC Precision Carving Machine
CNC Milling Center



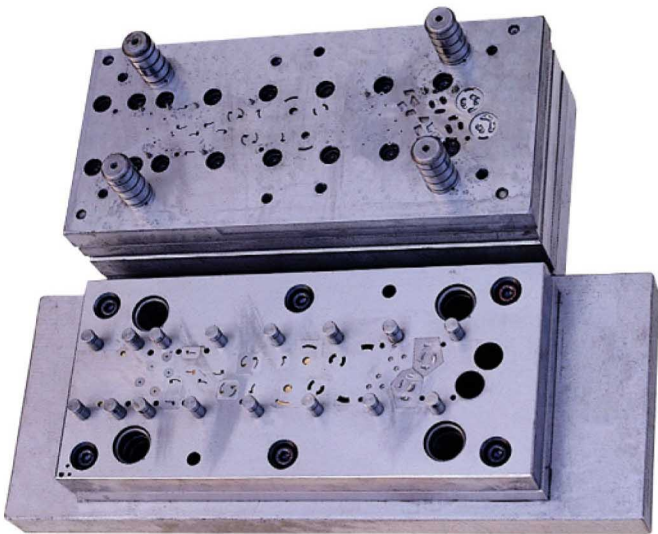
Linear Cutting Machine



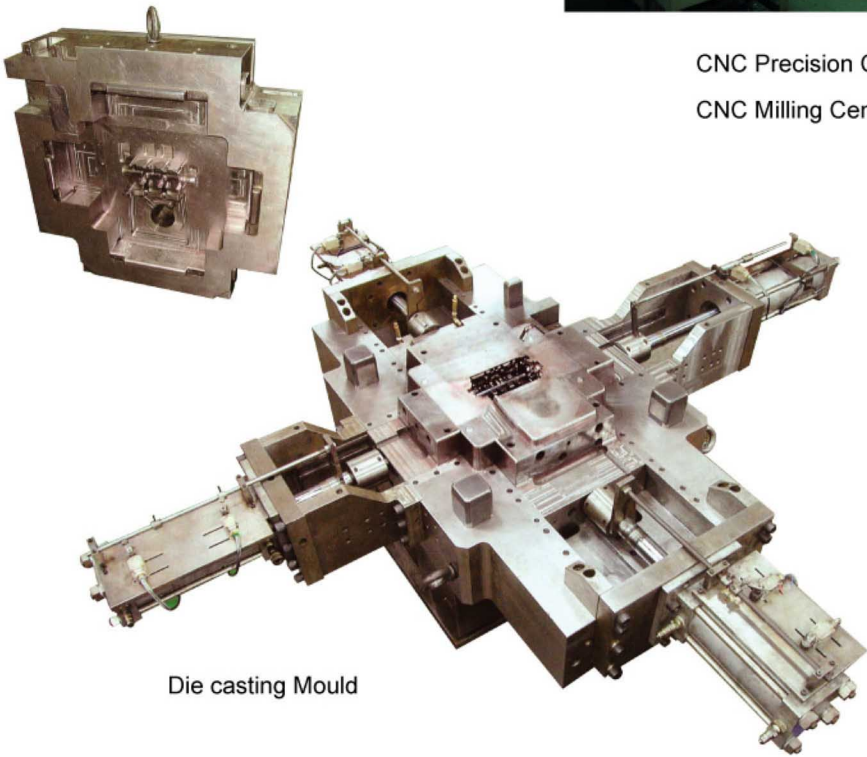
EDM



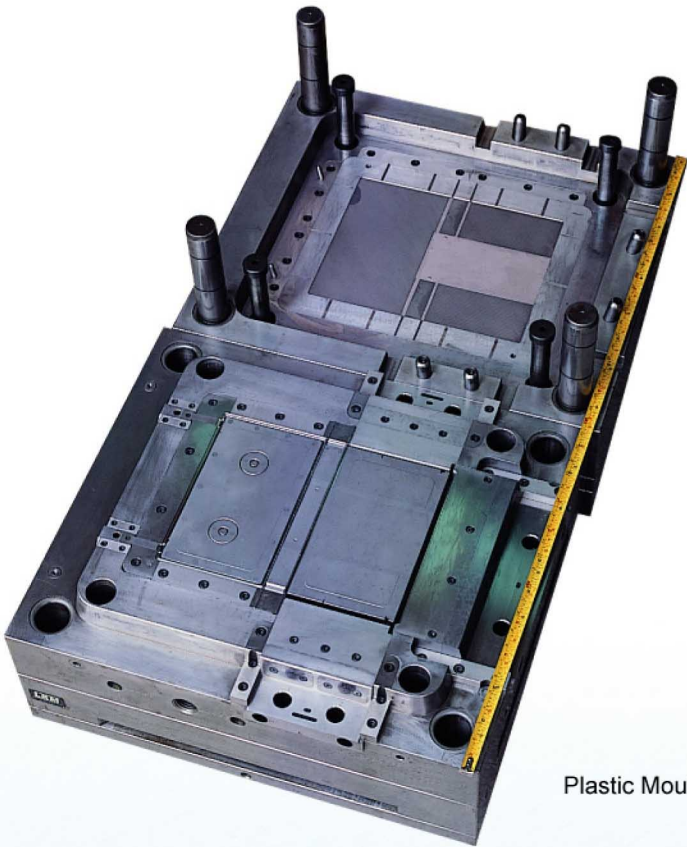
Milling Machine



Stamping Mould



Die casting Mould



Plastic Mould



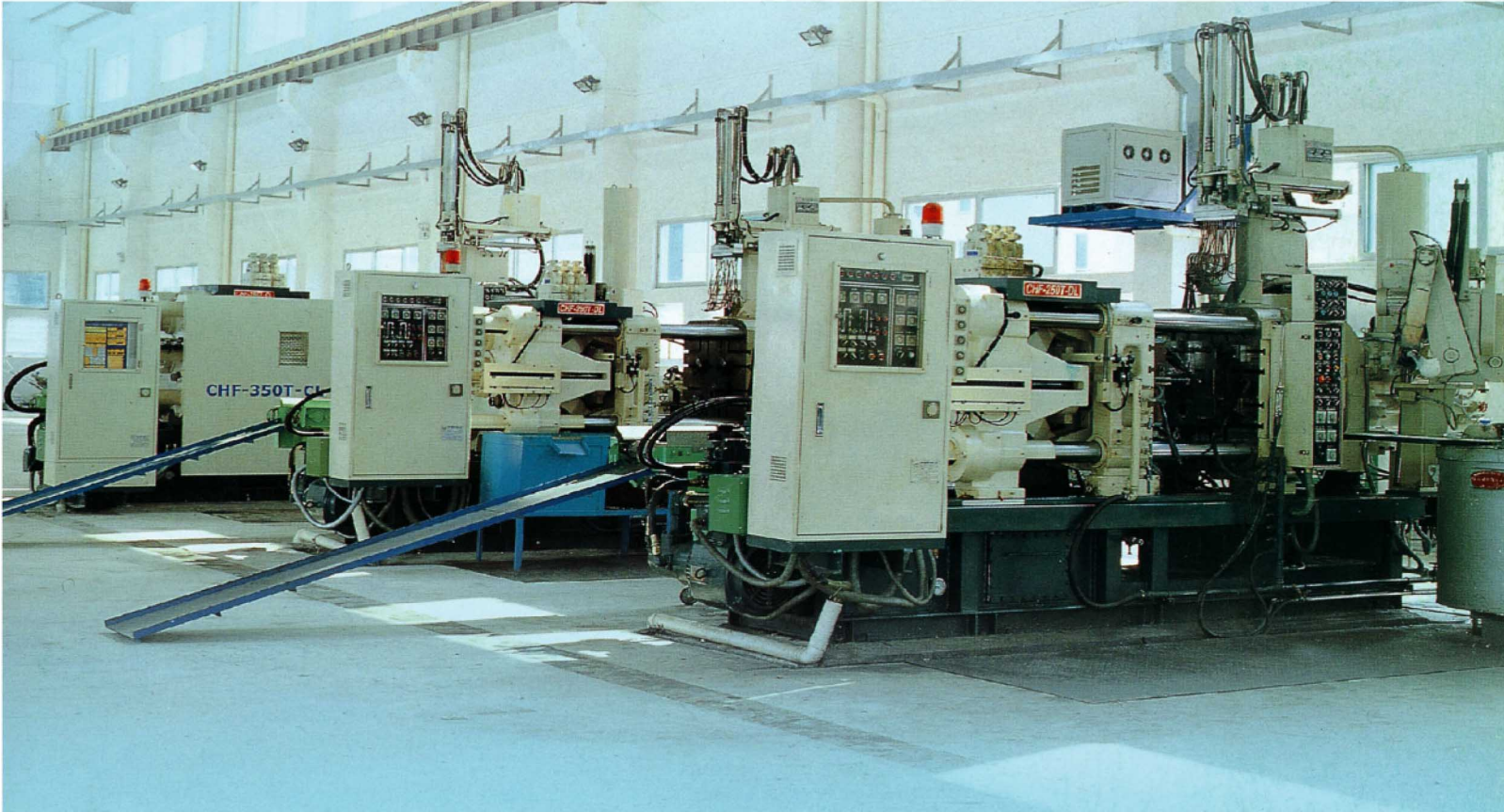
Grinding Machine

Die Casting Division

Description of Equipment	Quantity	Remarks
88Ton Zinc Casting Machine	2	Die Lock Force: 88 tons. Fully Automatic. 40,000 Castings/day
150Ton Aluminum Casting Machine	3	Die Lock Force: 150 tons. Fully Automatic. 3,000 Castings/day
250Ton Aluminum Casting Machine	2	Die Lock Force: 250 tons. Fully Automatic. 1,000 Castings/day
420Ton Aluminum Casting Machine	1	Die Lock Force: 420 tons. Fully Automatic. 1,000 Castings/day



Zinc Casting Machine



Aluminum Casting Machine



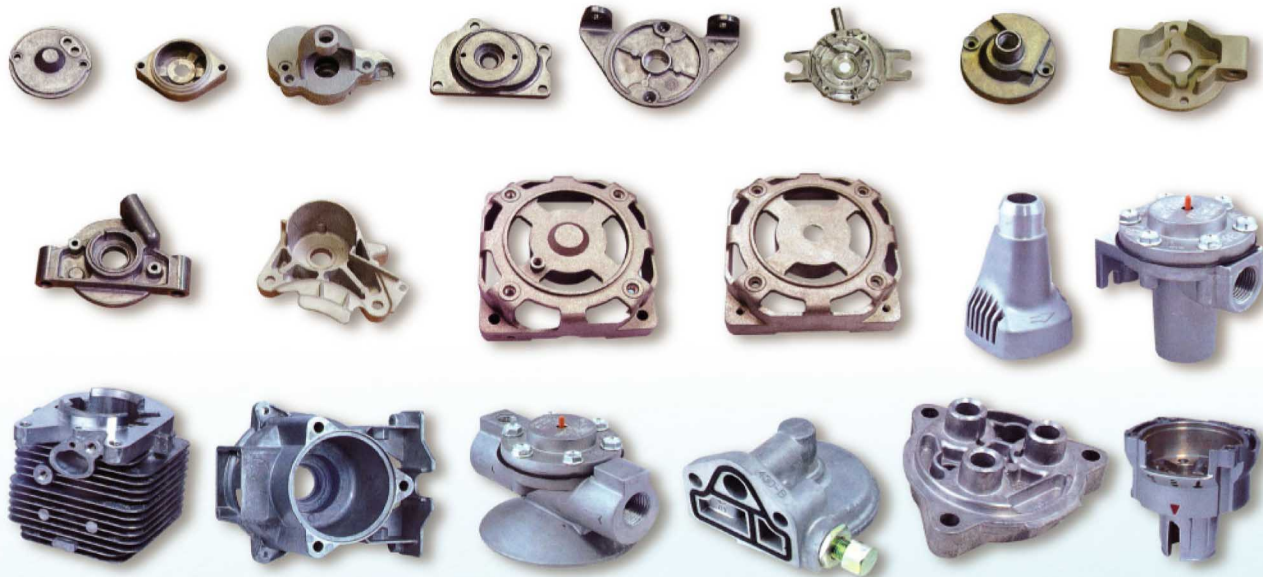
CNC Milling Center



CNC Precision Carving Machine



Threading

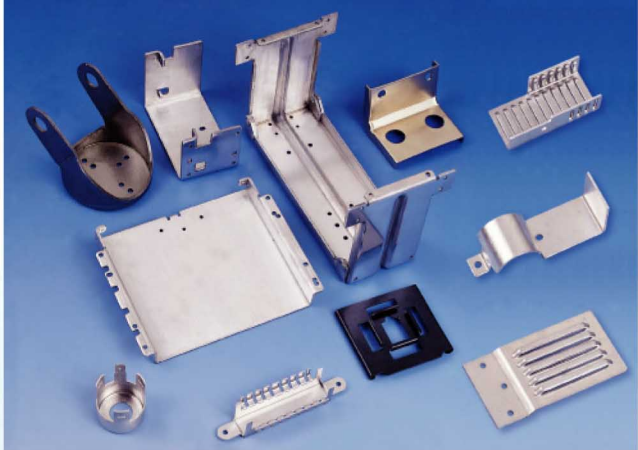
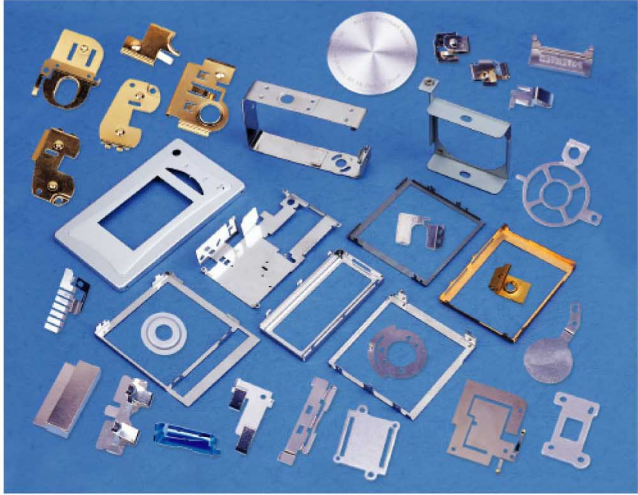
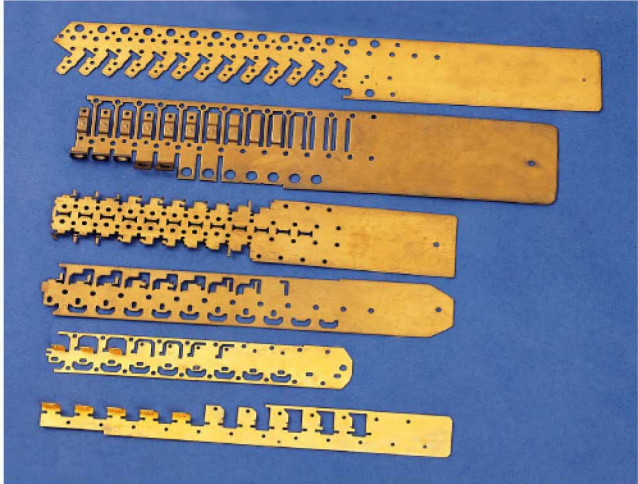
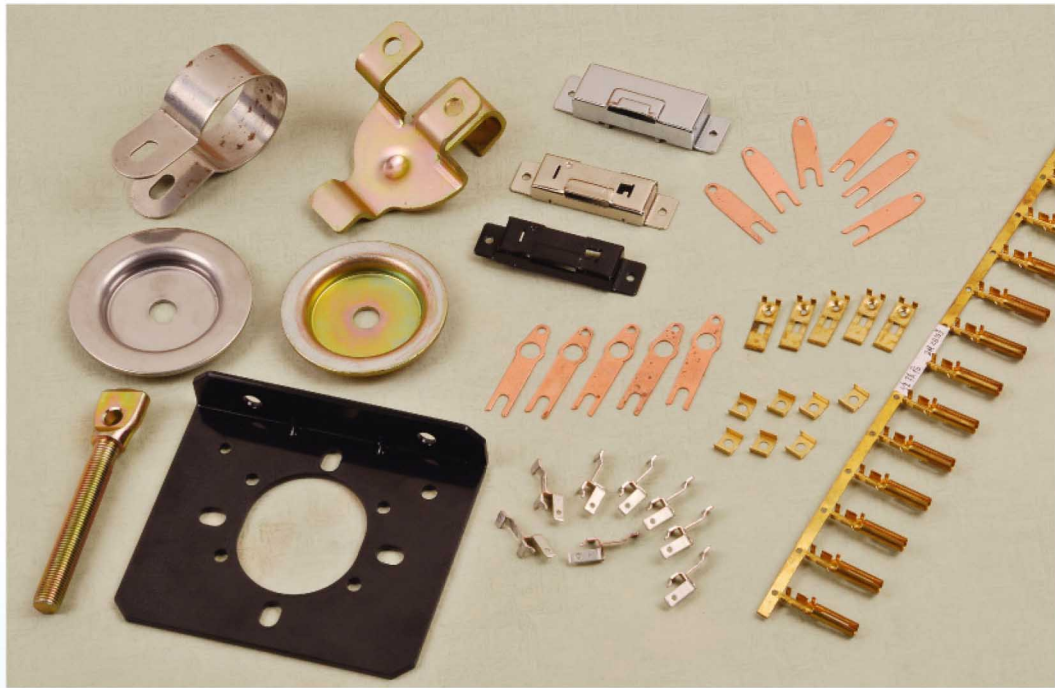


Stamping Division

Description of Equipment	Quantity	Remarks
63Ton Single Crank Press	1	Stroke Length: 110mm
45Ton Hydraulic Press	2	Stroke Length: 120mm
25Ton Single Crank Press	1	Stroke Length: 65mm



Press



Plastic Injection Molding Division

Description of Equipment	Quantity	Remarks
80Ton Horizontal Injection Molding Machine	2	80 tons clamping capacity. Shot weight: 114 grams
93Ton Horizontal Injection Molding Machine	3	93 tons clamping capacity. Shot weight:137 grams
148Ton Horizontal Injection Molding Machine	3	148 tons clamping capacity. Shot weight: 358 grams
188Ton Horizontal Injection Molding Machine	1	188 tons clamping capacity. Shot weight: 531 grams
208Ton Horizontal Injection Molding Machine	1	208 tons clamping capacity. Shot weight: 632 grams
250Ton Horizontal Injection Molding Machine	1	250 tons clamping capacity. Shot weight: 800 grams
80Ton Horizontal Injection Molding Machine	1	80 tons clamping capacity. Shot weight: 120 grams

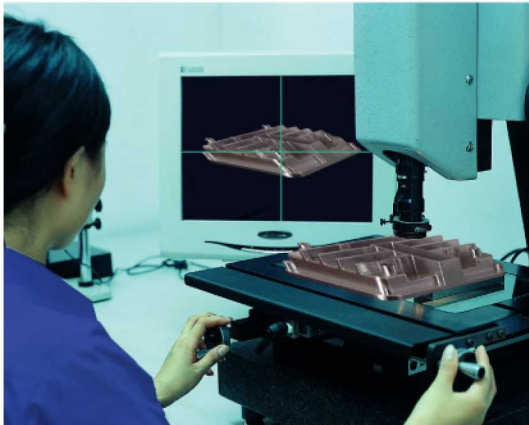


Horizontal Injection Molding Machine



Quality Assurance

Description of Equipment	Quantity
Co-ordinate Measuring Machine(Two-D)	1
Profile Projector	1
Hardness Insument	1
Salt Spray Test Machine	1
Height Gauge	3



Co-ordinate Measuring Machine(Two-D)



ISO9001: 2000 Certification



Height Gauge



Profile Projector



Salt Spray Test Machine



Hardness Insument

Contact Us

Location

Head Office : Kuen Lee Metal Works Limited

Room 202 Corn Yan Centre, 3 Jupiter Street, North Point, Hong Kong.

Tel : (852) 28063391 Fax : (852) 25641668

Factories : Mington Metal and Plastic Products Manufacturing Co., Ltd.

36 Fenghuang Road, Yongfa Industrial Park, Dongshan District,

Qishi Township, Dongguan City, Guandong Province, China 523511

Tel /Fax: (86) 769-86716393

Contact

For enquiries, please contact :

Raymond Mak

Tel : (852) 9343 3474 (Hong Kong)

(86) 13143989710 (China)

E-mail : raymondmak@mington-mp.com

Leslie Lou

Tel : (852) 9408 1472 (Hong Kong)

E-mail : leslielou@mington-mp.com

Mr. Wong Chi Sing

Tel : (86) 13925877119 (China)

E-mail : cswong@mington-mp.com

Mr. Yao Han Chang

Tel : (0769) 8678 7333

Mobile : 13829228388

Fax : (0769) 8678 7332

E-mail : jinying1105@163.com

or Info@mington-mp.com

Or

Mr. Joe Wellisch

Advantage Components, Inc.

8503 29th Street East, Parrish, FL 34219, USA

Tel : (941) 306 3492 (USA)

(852) 8170 1044 (Hong Kong)

(941) 232 3491 (Mobile, USA)

E-mail : joe.wellisch@advantagecomponents.com

Skype : [jswellisch](https://www.skype.com/en/contacts/jswellisch)